

EuropeSoftwares

**INSTRUCTIONS FOR USE
SPYSOUND/SPYSOUNDPRO**



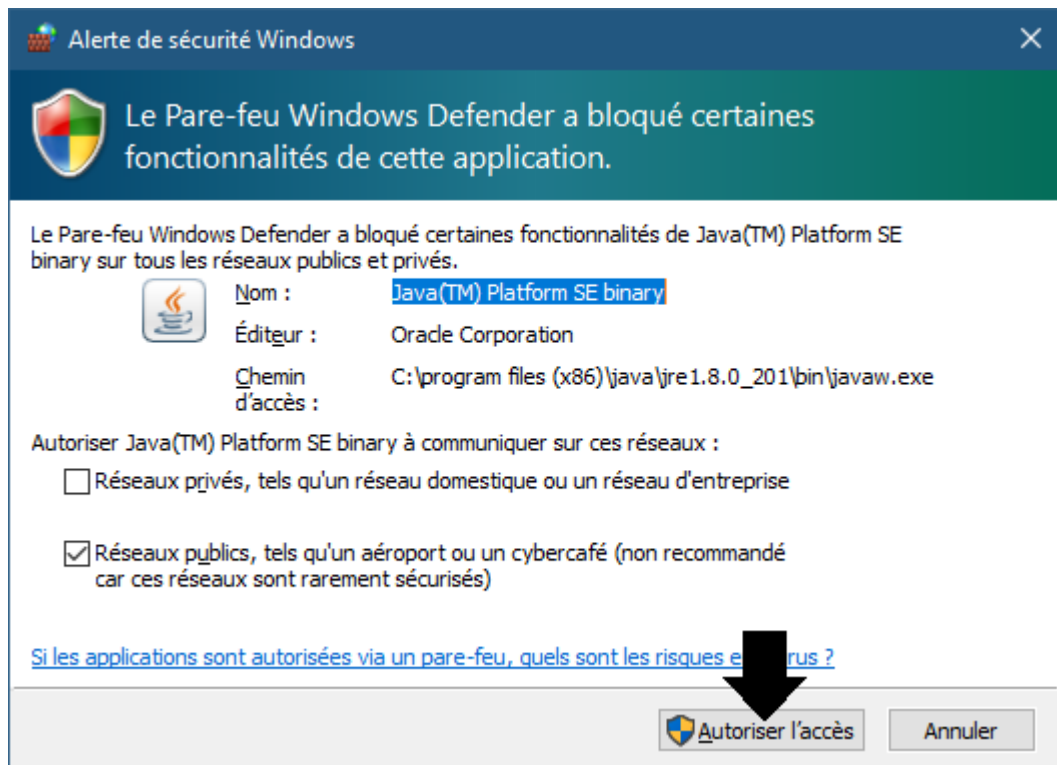
I. Installing the client and server part on the same computer (Test phase)

A. Context



B. SetupAtion The SpySound / SpySoundPro

1. Server part



(WINDOWS image)

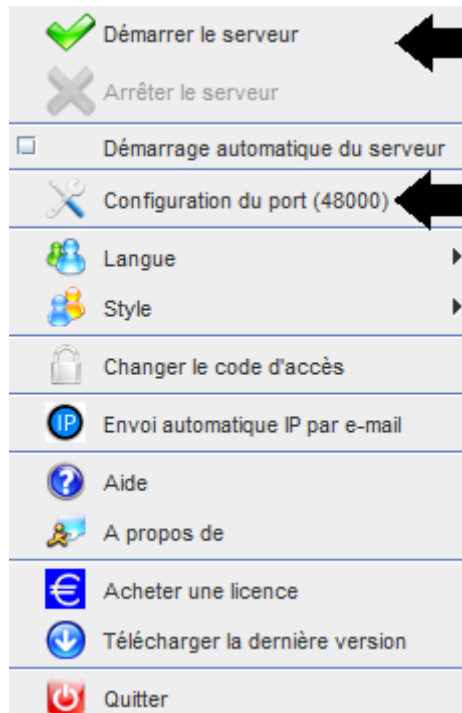
Important: IT IS NECESSARY TO AUTHORIZE THE APPLICATION TO ACCESS THE INTERNET: THE FIREWALL MUST BE PASSING TO BE ABLE TO COMMUNICATE WITH THE SECOND COMPUTER.

→ La Server part is accessible in the taskbar



(Image Windows)

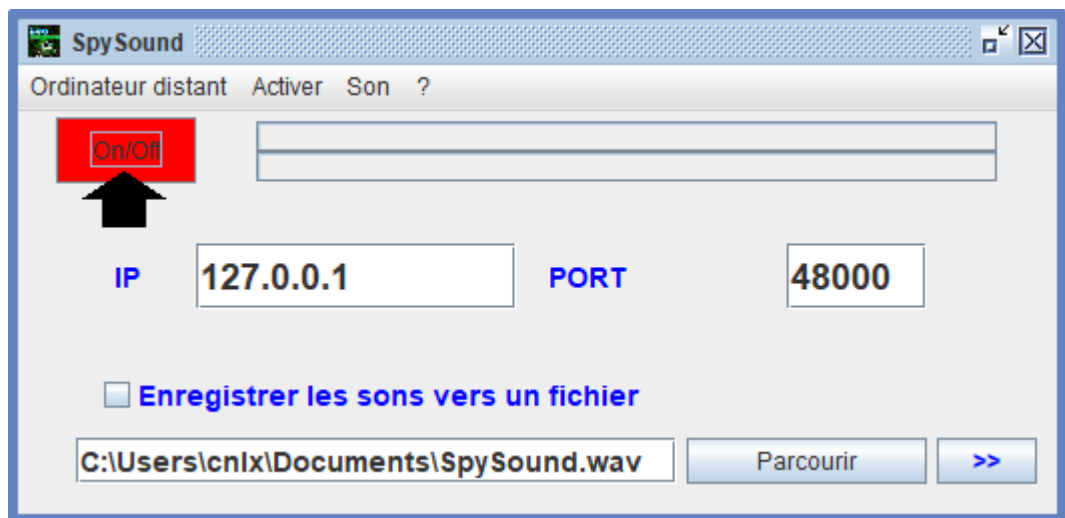
➔ Right click on the icon in the taskbar



(WINDOWS image)

Port example: 48000 (SAME CLIENT PART)

2. Client part

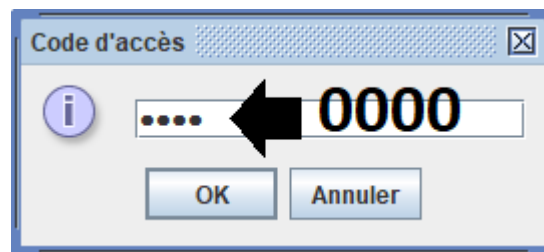


(WINDOWS image)

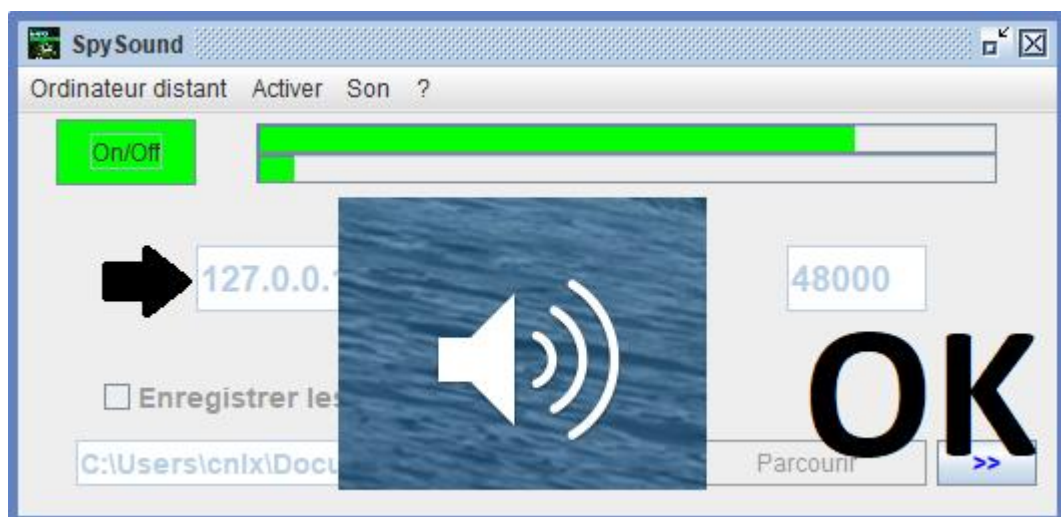
Port example: 48000 (same server part)

3. Test the communication between the client part and the server part on the same computer with its internal IP

Internal IP (127.0.0.1)



(WINDOWS image)



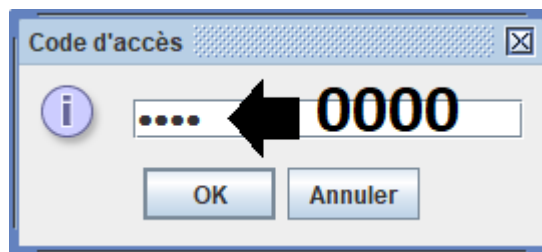
(WINDOWS image)

Communication → Ok

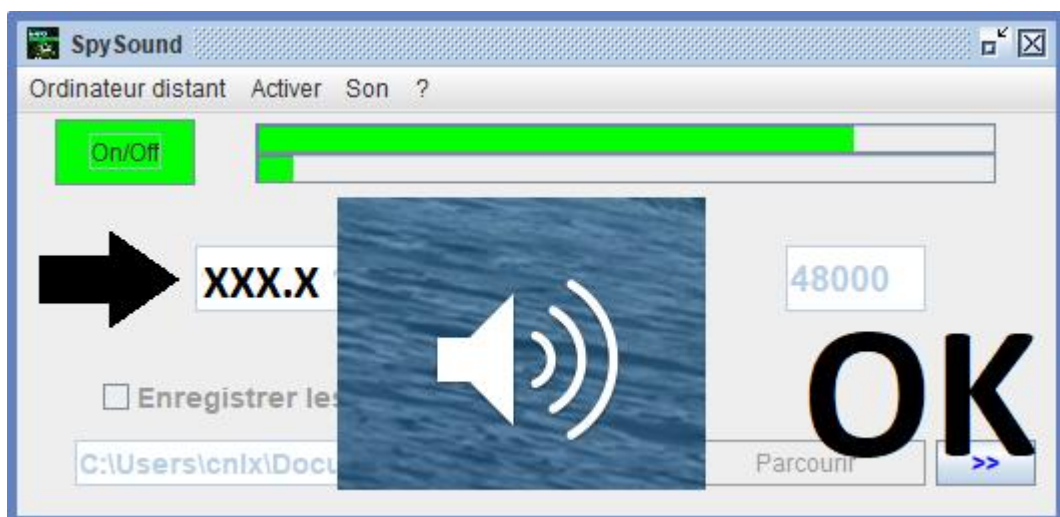
Note: If you do not hear sound, you should see the sound level of the microphone and the sound level of the speakers of the computer.

4. Test the communication between the part Client and the server part with the same computer and its external IP

External IP (XXX.XXX.XXX.XXX)



(WINDOWS image)



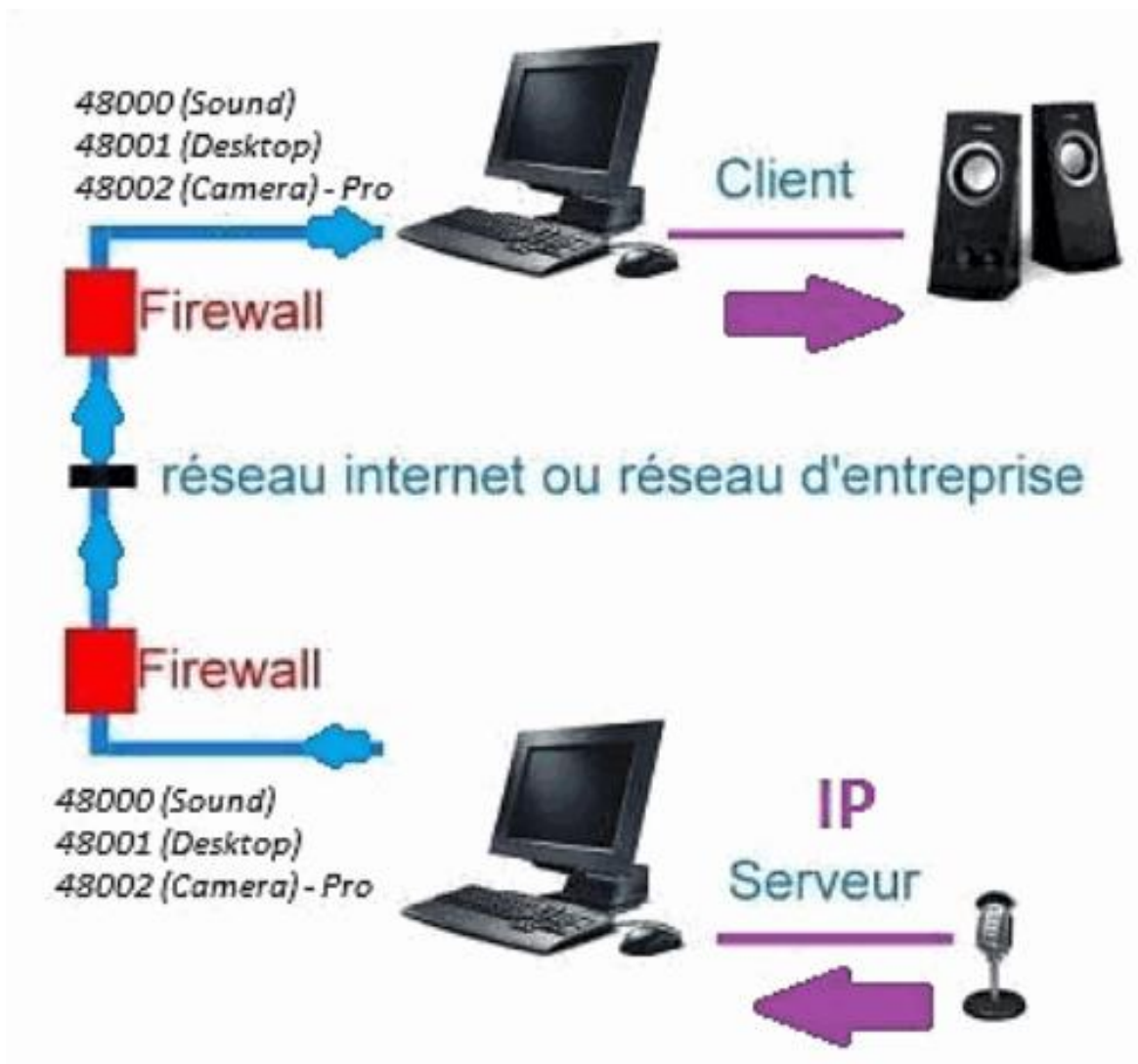
(WINDOWS image)

Communication → Ok

Note: If you do not hear sound, you should see the sound level of the microphone and the sound level of the speakers of the computer.

II. Installation of the client part and the Part Server on a Computer Different (commissioning)

A. Context

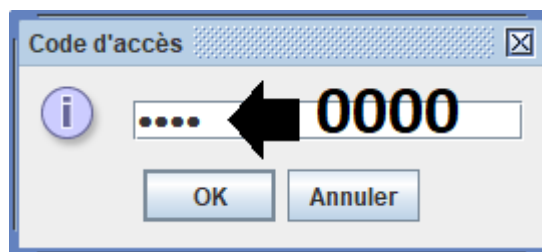


B. Installation

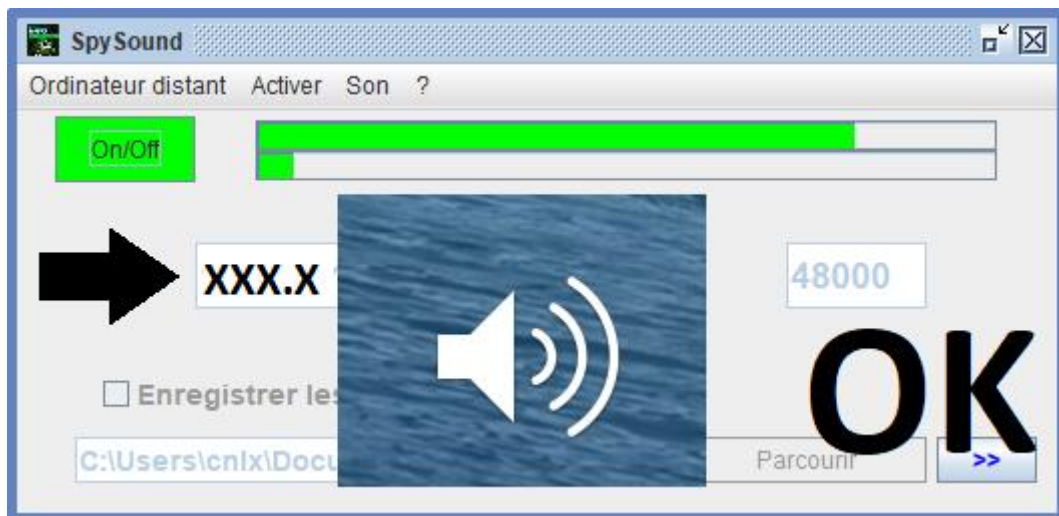
Reinstall the client part on another computer, and assign the IP of the computer where the server part is installed.

External IP D(e) the part server (XXX.XXX.XXX.XXX)

POrt Server part = client part porte (ex: 48000)



(WINDOWS image)



(WINDOWS image)

Communication → Ok

Note: If you do not hear sound, you should see the sound level of the microphone and the sound level of the speakers dare two computers.

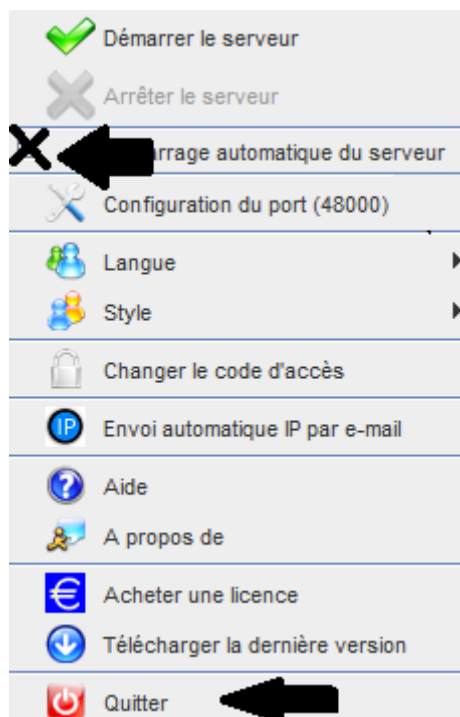
III. Installation The « Mode Hidden » of the server part (commissioning)

A. Shortcut in the startup folder

\$java-jar spysoundserver.jar-Hidden t = 0.75

| | | |
|-----------|---|-------------------------|
| -Hidden | ➔ | NO ICON MODE |
| -t = 0.75 | ➔ | LAUNCH AFTER 45 SECONDS |

B. Configuring the pArtie Server



(WINDOWS image)

C. Illustration



(WINDOWS image)

END OF DOCUMENT